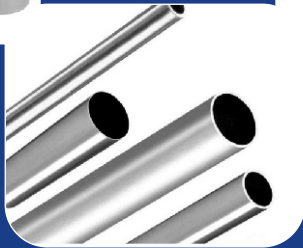
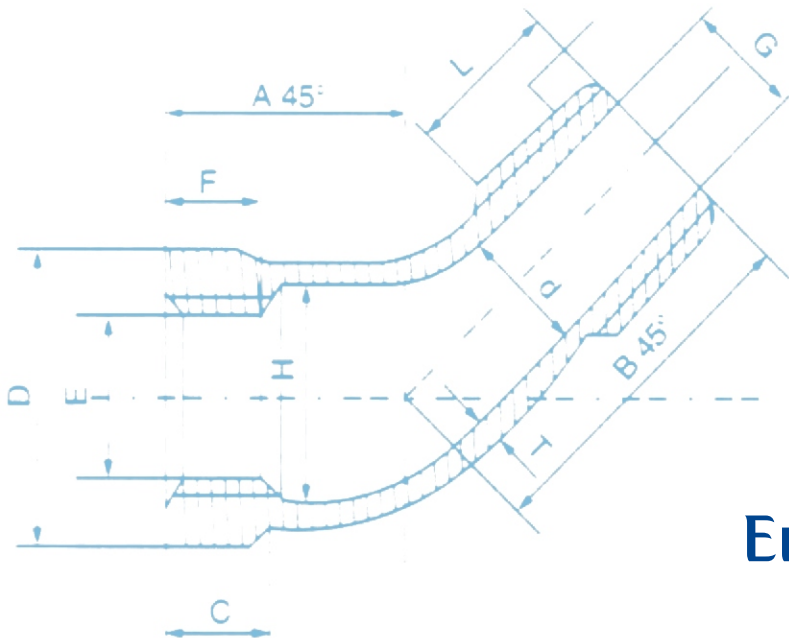




**EMIRERRI**



**Manufacturers of : Butt Weld Pipe Fitting & Forged Steel Fittings**  
**Exporters of : Seamless / Welded Steel Pipes & Tubes**



**Emirerri Steel Manufacturer  
Private Limited**

## About Us

Emirerri Steel is a Leading Manufacturer and Extensive Stockholder of piping products for the Oil, Gas, Petrochemical and Nuclear Industries, across globe.

Emirerri Steel is the Manufacturer of the following products – Butt-weld Fittings, Forged Fittings, Compression Fittings, Outlets, Flanges, Long Radius Bends in materials like Stainless Steel, Carbon Steel, Alloy Steel, Duplex & Super Duplex Steel, Nickel Alloys etc. We also manufacture and supply non-standard items in any material to customer's specifications.

We are committed to serve your organization's sourcing needs of the above products which are further strengthened by our well-established in-house infrastructure capabilities and capacities. We even have a comprehensive stock of raw material and finished products.

We are growing organization having strong work force of skilled, experienced and qualified employees with the objective to provide quality products and services. We are keen listeners to our customers that enables us to live upto market expectations of today and tomorrow – through product customization and development.

### Our Values

**To fulfill our most valuable assets – clients' needs through employment skilled people, technology and equipment.**

### Why Emirerri Steel?

Emirerri is a renowned name in India in steel manufacturing for its products' quality, transparent dealings and transactions of our Stainless steel, Carbon Steel & Alloy Steel Products.

**Specialties that make us a profitable business partner for our clients are:**

- Cost-effective rates
- Customized packaging
- Easy payment modes
- Superior quality products
- Timely delivery of products
- Customized solution
- Customer focused approach
- Good Financial Position & TQM
- Timely delivery schedule
- Experience and specialty in work

### Our Vision :

**Bring world class capabilities to promote commercial arrangements and deliver our customers' glocalised needs.**

### Our Mission :

Provide technically sound solutions and create additional value in mutual interest with our customers resulting in being a preferred Stockists & Suppliers within the Stockists & Suppliers industry.



Our products are widely used in petroleum, chemical, gas, papermaking, electric power, shipbuilding, metallurgy, food, machine, water treatment and other fields.

## STANDARDS

Standard Code	Standard Name	Standard Code	Standard Name
ASME SA-403	Wrought Austenitic Stainless Steel Piping Fittings	GOST 17375	Steel Butt-welding Pipe Fittings, Elbows
ASME B-16.9	Factory-Made wrought steel pipe fittings	GOST 17376	Steel Butt-welding Pipe Fittings, tees
ASME SA-234	Carbon and Alloy Steel Pipe Fittings	GOST 17378	Steel Butt-welding Pipe Fittings, reducers
ASME SA-420	Forged Carbon and Alloy Steel Pipe Fittings	GOST 17379	Steel Butt-welding Pipe Fittings, Caps
ASME B16.11	Socket-welding and Threaded Forging Fittings	GOST 12820	Steel Flange
ASME B16.28	Wrought Steel But-welding short radius elbows	GOST 12821	Steel Flange
ASME B16.25	Butt-welding Ends	DIN 2605	Steel Butt-welding Pipe Fittings
ASTM A312/A315M	Cold Worked Austenitic Stainless Steel Pipes	DIN 2615	Steel Butt-welding Pipe Fittings, Tees
ASME/ASTM A269	Stainless Steel Tubing	DIN 2616	Steel Butt-welding Pipe Fittings, Reducers
ASTM A999/A999M	Alloy and Stainless Steel Pipes	DIN 2617	Steel Butt-welding Pipe Fittings, Caps
ASME/ANSI B36.19M	Stainless Steel Pipe	EN 10253	Steel Pipe Fittings
ASTM A105/A105M	Carbon Steel Forgings for Piping Applications	EN 1092-1	Steel Flange
ASTM A106/A106M	High Temperature Seamless Carbon Steel Pipe	GB/T 14976	Stainless Steel Pipe
ASTM A335/A335M	Seamless Alloy-Steel Pipe for High-Temperature	GB/T 12459	Steel Butt-welding Seamless Fittings
ASTM 182/A182M	Forged Alloy and Stainless Fittings, Flanges	GB/T 13401	Steel Plate Butt-welding Pipe Fittings
ASTM 350/A350M	Carbon and Low Alloy Steel Forgings	GB/T 14383	Forged Steel Socket-welding Pipe Fittings
ASTM A815/A815M	Stainless Steel Pipe Fittings	GB/T 14626	Forged Steel threaded Pipe Fittings
ASTM A515/A515M	Carbon Steel Plate	SH 3065	Specification for Tube Furnace Sharp Bend
MSS SP-43	Wrought Stainless Steel Butt-welding Fittings	SH 3406	Steel Pipe Flanges for Petrochemical Industry
MSS SP-75	Forging Butt-welding fittings	SH 3408	Steel Butt-welding Seamless Fittings
MSS SP-79	Socket-welding reducing Inserts	SH 3409	Steel Plate Butt-welding Pipe Fittings
MSS SP-83	Stock-welding and threaded Unions	SH 3410	Forged Steel Stock-welding Fittings
MSS SP-95	Swaged nipples and round plugs	ISO3419	Non-Alloy Steel and Alloy Steel Butt-welding Fittings
MSS SP-97	Forged Outlet	ISO 5251	Stainless Steel Butt-welding Fittings

# MATERIAL CROSS REFERENCE LIST

## STAINLESS STEEL (AUSTENITIC)

USA	Japan	Germany		U.K.		France	Italy	Spain	Sweden	China
AISI/SAE	JIS	W-nr.	DIN	BS	EN	AFNOR	UNI	UNE	SS	GB
304L	SUS304L	1.4306	X2CrNi1911	304S11	–	Z2CN18.10	X2CrNi18.11	–	2352	OCr19Ni10
304	SUS304	1.4350	X5CrNi189	304S11	58E	Z6CN18.09	X5CrNi1810	F.3551 / F.3541 F.3504	2332	OCr18Ni9
303	SUS303	1.4305	X12CrNiS188	303S21	58M	Z10CNF18.09	X10CrNiS18.09	F.3508	2346	1Cr18Ni9MoZr
–	SUS304L	–	–	304C12	–	Z3CN19.10	–	–	2333	–
304L	SCS19	1.4306	X2CrNi189	304S12	–	Z2CrNi1810	X2CrNi18.11	F.3503	2352	–
301	SUS301	1.4310	X12CrNi177	–	–	Z12CN17.07	X12CrNi1707	F.3517	2331	Cr17Ni7
304LN	SUS304LN	1.4311	X2CrNiN1810	304S62	–	Z2CN18.10	–	–	2371	–
316	SUS316	1.4401	X5CrNiMo1810	316S16	58J	Z6CND17.11	X5CrNiMo1712	F.3543	2347	OCr17Ni11Mo2
–	SCS13	1.4308	G-X6CrNi189	304C15	–	Z6CN18.10M	–	–	–	–
–	SCS14	1.4408	G-X6CrNiMo1810	316C16	–	–	–	F.8414	–	–
–	SCS22	1.4581	G-X5CrNiMoNb1810	318C17	–	Z4CNDNb1812M	XG8CrNiMo1811	–	–	–
316LN	SUS316LN	1.4429	X2CrNiMoN1813	–	–	Z2CND17.13	–	–	2375	OCr17Ni13Mo
316L	–	1.4404	–	316S13	–	Z2CND17.12	X2CrNiMo1712	–	2348	–
316L	SCS16 / SUS316L	1.4435	X2CrNiMo1812	316S13	–	Z2CND17.12	X2CrNiMo1712	–	2353	OCr27Ni12Mo3
316	–	1.4436	–	316S13	–	Z6CND18-12-03	X8CrNiMo1713	–	2343, 2347	–
317L	SUS317L	1.4438	X2CrNiMo1816	317S12	–	Z2CND19.15	X2CrNiMo1816	–	2367	OCr19Ni13Mo
UNS V 0890A	–	1.4539	X1NiCrMo	–	–	Z6CNT18.10	–	–	2562	–
321	SUS321	1.4541	X10CrNiTi189	321S12	58B	Z6CNT18.10	X6CrNiTi1811	F.3553 F.3523	2337	1Cr18Ni9Ti
347	SUS347	1.4550	X10CrNiNb189	347S17	58F	Z6CNNb18.10	X6CrNiNb1811	F.3552 F.3524	2338	1Cr18Ni11Nb
316Ti	–	1.4571	X10CrNiMoTi1810	320S17	58J	Z6CNDT17.12	X6CrNiMoTi1712	F.3535	2350	Cr18Ni12Mo2T
318	–	1.4583	X10CrNiMoNb1812	–	–	Z6CNDNb1713B	X6CrNiMoNb1713	–	–	Cr17Ni12Mo3Mb
309	SUH309	1.4828	X15CrNiSi2012	309S24	–	Z15CNS20.12	X6CrNi2520	–	–	1Cr23Ni13
310S	SUH310	1.4845	X12CrNi2521	310S24	–	Z12CN2520	X6CrNi2520	F.331	2361	OCr25Ni20
308	SCS17	1.4406	X10CrNi18.08	–	58C	Z1NCDU25.20	–	F.8414	2370	–
–	–	1.4418	X4CrNiMo165	–	–	Z6CND16-04-01	–	–	–	–
17-7PH	–	1.4568 1.4504	–	316S111	–	Z8CNA17-07	X2CrNiMo1712	–	–	–
NO8028 S31254	–	1.4563	–	–	–	Z1NCDU31-27-03 Z1CNDU20-18-06AZ	–	–	2584 2378	–
321	SUS321	1.4878	X12CrNiTi189	321S32	58B, 58C	Z6CNT18.12B	X6CrNiTi18.11	F.3523	–	1Cr18Ni9Ti

## STAINLESS STEEL (FERRITIC, MARTENSITIC)

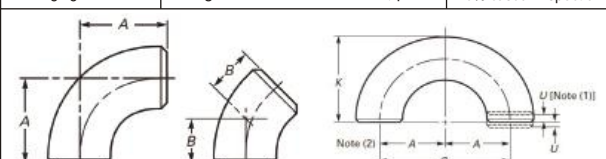
USA	Japan	Germany		U.K.		France	Italy	Spain	Sweden	China
AISI/SAE	JIS	W-nr.	DIN	BS	EN	AFNOR	UNI	UNE	SS	GB
403	SUS403	1.4000	X7Cr13	403S17	–	Z6C13	X6Cr13	F.3110	2301	OCr13 / 1Cr12
–	–	1.4001	X7Cr14	–	–	–	–	F.8401	–	–
416	SUS416	1.4005	X12CrS13	416S21	–	Z11CF13	X12CrS13	F.3411	2380	–
410	SUS410	1.4006	X10Cr13	410S21	56A	Z10C14	X12Cr13	F.3401	2302	1Cr13
430	SUS430	1.4016	X8Cr17	430S15	60	Z8C17	X8Cr17	F.3113	2320	1Cr17
–	SCS2	1.4027	G-X20Cr14	420C29	56B	Z20C13M	–	–	–	–
–	SUS420J2	1.4034	X46Cr13	420S45	56D	Z40CM	X40Cr14 Z38C13M	F.3405	2304	4Cr13
405	–	1.4003	–	405S17	–	Z8CA12	X6CrAl13	–	–	–
420	–	1.4021	–	420S37	–	Z8CA12	X20Cr13	–	2303	–
431	SUS431	1.4057	X22CrNi17	431S29	57	Z15CNi6.02	X16CrNi16	F.3427	2321	1Cr17Ni2
430F	SUS430F	1.4104	X12CrMoS17	–	–	Z10CF17	X10CrS17	F.3117	2383	Y1Cr17
434	SUS434	1.4113	X6CrMo17	434S17	–	Z8CD17.01	X8CrMo17	–	2325	1Cr17Mo
CA6-NM	SCS5	1.4313	X5CrNi134	425C11	–	Z4CND13.4M	(G)X6CrNi304	–	2385	–
405	SUS405	1.4724	X10CrAl113	403S17	–	Z10C13	X10CrAl112	F.311	–	OCr13Al
430	SUS430	1.4742	X10CrAl118	430S15	60	Z10CAS18	X8Cr17	F.3113	–	Cr17
HNV6	SUH4	1.4747	X80CrNiSi20	443S65	59	Z80CSN20.02	X80CrSiNi20	F.320B	–	–
446	SUH446	1.4762	X10CrAl124	–	–	Z10CAS24	X16Cr26	–	2322	2Cr25N
EV8	SUH35	1.4871	X53CrMnNiN219	349S54	–	Z52CMN21.09	X53CrMnNiN219	–	–	5Cr2Mn9Ni4N
S44400	–	1.4521	X1CrMoTi182	–	–	–	–	–	2326	–
–	–	1.4922	X20CrMoV12-1	–	–	–	X20CrMoNi1201	–	2317	–
630	–	1.4542	–	–	–	Z7CNU17-04	–	–	–	–

## CARBON STEEL

USA	Japan	Germany		U.K.		France	Italy	Spain	Sweden	China
AISI/SAE	JIS	W-nr.	DIN	BS	EN	AFNOR	UNI	UNE	SS	GB
A570.36	STKM 12A STKM 12C	1.0038	RSt.37-2	4360 40 C	--	E 24-2 Ne	--	--	1311	15
1015	--	1.0401	C15	080M15	--	CC12	C15, C16	F.111	1350	15
1020	--	1.0402	C22	050A20	2C	CC20	C20, C21	F.112	1450	20
--	--	1.0722	10SPb20	--	--	10PbF2	CF10Pb20	10SPb20	--	--
12L14	--	1.0737	9SMnPb36	--	--	S300Pb	CF9SMnPb36	12SMnP35	1926	--
1015	S15C	1.1141	Ck15	080M15	32C	XC12	C16	C15K	1370	15
1025	S25C	1.1158	Ck25	--	--	--	--	--	--	25
A572-60	--	1.8900	StE380	4360 55 E	--	--	FeE390KG	--	2145	--
1035	--	1.0501	C35	060A35	--	CC35	C35	F.113	1550	35
1045	--	1.0503	C45	080M46	--	CC45	C45	F.114	1650	45
1140	--	1.0726	35S20	212M36	8M	35MF4	--	F210G	1957	
1039	--	1.1157	40Mn4	150M36	15	35M5	--	--	--	40Mn
1335	SMn438(H)	1.1167	36Mn5		--	40M5	--	36Mn5	2120	35Mn2
1330	SCMn1	1.1170	28Mn6	150M28	14A	20M5	C28Mn	--	--	30Mn
1035	S35C	1.1183	Cf35	060A35	--	XC38TS	C36	--	1572	35Mn
1045	S45C	1.1191	Ck45	080M46	--	XC42	C45	C45K	1672	Ck45
1050	S50C	1.1213	Cf53	060A52	--	XC48TS	C53	--	1674	50
1055	--	1.0535	C55	070M55	9		C55	--	1655	55
1060	--	1.0601	C60	080A62	43D	CC55	C60	--	--	60
1055	S55C	1.1203	Ck55	070M55	--	XC55	C50	C55K	--	55
1060	S58C	1.1221	Ck60	080A62	43D	XC60	C60	--	1678	60Mn
1095	--	1.1274	Ck101	060A96	--	XC100	--	F.5117	1870	--



Emirerri uses timely calibrated tools to continually check the tolerance of all fittings. All dimensions are checked both by the operator and our quality control department to ensure the highest quality.

Control Plan for Quality Test										
Product	Elbow	No.	QC1-090101-06							
Name	Elbow	Dimension Standard	ASTM B 16.9-12							
Material Standard	A 234 WPB	Original Material Standard	A 106							
Material Request	Chemical Composition (%)									
	C	Mn	Si	Mo	S	P	Cr	Ni	Cu	V
	≤0.3	0.29-1.06	≥0.10	≤0.15	≤0.058	≤0.50	≤0.40	≤0.40	≤0.40	≤0.08
	Mechanical Property									
	T S (Mpa)			E/L (S%)			Y/S (Mpa)			
415-655			≥30			≥240				
Manufacture & Process	3.1 Mill Test Certificate									
	Process name	Process details & tools					Inspection method			
	Cutting	Saw (saw (machine))					10% casual Inspection			
	Forming	Hot forming (850±25OC)					10% casual Inspection			
	Rough Sizing	Hot process					10% casual Inspection			
	End Beveling	Beveling machine (37.5 <sup>2</sup> +2.52 <sup>2</sup> )					10% casual Inspection			
Quality Inspection	Surface rough process	Rub surface defect					10% casual Inspection			
	Surface treatment	Sand blasting & painting Surface quality according to ASTM B 16.9					10% casual Inspection			
	Size	According to ASTM B16.9					10% casual Inspection			
Marking & Packaging	Marking	Manufacturer name material heat No. size specification and so on					10% casual Inspection			
	Painting	According with client's requirement					10% casual Inspection			
	Packaging	Fumigation-free wooden cases, pallet					10% casual Inspection			
Sketch Pictures										

**ALLOY STEEL**

USA	Japan	Germany		U.K.		France	Italy	Spain	Sweden	China
AISI/SAE	JIS	W-nr.	DIN	BS	EN	AFNOR	UNI	UNE	SS	GB
A573-81	SM400A, SM400B SM400C	1.0144	St.44.2	4360 43 C	-	E28-3	-	-	1412	-
-	SM490A, SM490B SM490C	1.0570	St52-3	4360 50 B	-	E36-3	Fe52CFN	-	2132	-
5120	-	1.0841	St52-3	150M19	-	20MC5	Fe52	F.431	2172	-
9255	-	1.0904	55Si7	250A53	45	55S7	55Si8	56Si7	2085	55Si2Mn
9262	-	1.0961	60SiCr7	-	-	60SC7	60SiCr8	60SiCr8	-	-
ASTM 52100	SUJ2	1.3505	100Cr6	534A99	31	100C6	100Cr6	F.131	2258	Gr15, 45G
ASTM A204Gr.A	-	1.5415	15Mo3	1501-240	-	15D3	16Mo3KW	16Mo3	2912	-
4520	-	1.5423	16Mo5	1503-245-420	-	-	16Mo5	16Mo5	-	-
ASTM A350LF5	-	1.5622	14Ni6	-	-	16N6	14Ni6	15Ni6	-	-
ASTM A353	-	1.5662	X8Ni9	1501-509-510	-	-	X10Ni9	XBNI09	-	-
3135	SNC236	1.5710	36NiCr6	640A35	111A	35NC6	-	-	-	-
3415	SNC415(H)	1.5732	14NiCr10	-	-	14NC11	16NiCr11	15NiCr11	-	-
3415, 3310	SNC815(H)	1.5752	14NiCr14	655M13	36A	12NC15	-	-	-	-
8620	SNCM220(H)	1.6523	21NiCrMo2	805M20	362	20NCD2	20NiCrMo2	20NiCrMo2	2506	-
8740	SNCM240	1.6546	40NiCrMo22	311-Type 7	-	-	40NiCrMo2(KB)	40NiCrMo2	-	-
-	-	1.6587	17CrNiMo6	820A16	-	18NCD6	-	14NiCrMo13	-	-
5015	SCr415(H)	1.7015	15Cr3	523M15	-	12C3	-	-	-	15Cr
5140	SCr440	1.7045	42Cr4	-	-	-	-	42Cr4	2245	40Cr
5155	SUP9(A)	1.7176	55Cr3	527A60	48	55C3	-	-	-	20CrMn
-	SCM415(H)	1.7262	15CrMo5	-	-	12CD4	-	12CrMo4	2216	-
ASTM A182 F11, F12	-	1.7335	13CrMo4 4	1501-620Gr27	-	15CD3.5 15CD4.5	14CrMo45	14CrMo45	-	-
ASTM A182 F.22	-	1.7380	10CrMo910	1501-622 Gr31, 45	-	12CD9 12CD10	12CrMo9 12CrMo10	TU.H	2218	-
-	-	1.7715	14MoV63	1503-660-440	-	-	-	13MoCrV6	-	-
-	-	1.8523	39CrMoV13 9	897M39	40C	-	36CrMoV12	-	-	-
9840	-	1.6511	36CrNiMo4	816M40	110	40NCD3	38NiCrMo4(KB)	35NiCrMo4	-	-
4340	-	1.6582	34CrNiMo6	817M40	24	35NCD6	35NiCrMo6(KB)	-	2541	40CrNiMoA
5132	SCr430(H)	1.7033	34Cr4	530A32	18B	32C4	34Cr4(KB)	35Cr4	-	35Cr
5140	SCr440(H)	1.7035	41Cr4	530M40	18	42C4	41Cr4	42Cr4	-	40Cr
5115	-	1.7131	16MnCr5	(527M20)	-	16MC5	16MnCr5	16MnCr5	2511	18CrMn
4130	SCM420 SCM430	1.7218	25CrMo4	1717CDS110 708M20	-	25CD4	25CrMo4(KB)	55Cr3	2225	30CrMn
4137 4135	SCM432 SCCRM3	1.7220	34CrMo4	708A37	19B	35CD4	35CrMo4	34CrMo4	2234	35CrMo
4140 / 4142	SCM 440	1.7223	41CrMo4	708M40	19A	42CD4TS	41CrMo4	42CrMo4	2244	40CrMoA
4140	SCM440(H)	1.7225	42CrMo4	708M40	19A	42CD4	42CrMo4	42CrMo4	2244	42CrMo 42CrMnMo
-	-	1.7361	32CrMo12	722M24	40B	30CD12	32CrMo12	F.124.A	2240	-
6150	SUP10	1.8159	50CrV4	735A50	47	50CV4	50CrV4	51CrV4	2230	50CrVA
-	-	1.8509	41CrAlMo7	905M39	41B	40CAD6 40CAD2	41CrAlMo7	41CrAlMo7	2940	-



# AFNOR-GRADE COMPARISON TABLE

## AFNOR-Steel Grade Equivalency Table

Europe EN	Germany DIN	France AFNOR	Italy UNI	USA SAE/AISI	Usual Finish
C10E	CK10		C10	SAE1010	HR-Hot Rolled
C120U	C125W	C120U	C120KU		
C12E	CK12		C12	SAE1012	HR-Hot Rolled
C15D	C15	CC12	C15	1010	
C15E	CK15		C15	SAE1015	HR-Hot Rolled
C20E	CK20		C20	SAE1020	HR-Hot Rolled
C22E	CK22	XC18			HR-Hot Rolled
C25E	CK25	XC25			HR-Hot Rolled
C30E	CK30	XC32			HR-Hot Rolled
C35E	CK35	XC38	C35	SAE1035	HR-Hot Rolled
C40E	CK40	XC42	C40	SAE1040	HR-Hot Rolled
C45E	CK45	XC48	C45	SAE1045	HR-Hot Rolled
C45E	CK45	XC48	C45	SAE1042-1045	HR-Hot Rolled
C50E	CK50		C50	SAE1050	HR-Hot Rolled
C55E	CK55	XC55		SAE1055	HR-Hot Rolled
C60E	CK60		C60	SAE1060	HR-Hot Rolled
C70E	CK70	XC70	C70	SAE1070	HR-Hot Rolled
C80E	CK80	XC80	C80	SAE1080	HR-Hot Rolled
C8E	CK8		C8	SAE1008	HR-Hot Rolled
DC01	ST12	C	FEP01	A366/CQ	HR-Hot Rolled
DC01EK				TYPE I	CR-Cold Rolled
DC03	ST13	E	FEP02	A619/DQ	HR-Hot Rolled
DC03ED			FEP04S	TYPE II	CR-Cold Rolled
DC04	ST14	ES	FEP04	A620/DQSK	HR-Hot Rolled
DC04ED	ED3			TYPE II	CR-Cold Rolled
DC04EK	EK2	EME		TYPE I	HR-Hot Rolled
DC05	ST15	SES	FEP05		HR-Hot Rolled
DC06	IF18	IF	FEP06	EDDS	CR-Cold Rolled
DC06ED	ED4			TYPE III	CR-Cold Rolled
DC06EK	EK4	EMES	FEP02S	TYPE III	CR-Cold Rolled
DC07			FEP07		CR-Cold Rolled
DD11	STW22	1C	FEP11	CS	HR-Hot Rolled
DD11(Cu)	STW22(Cu)	1C(Cu)	FEP11(Cu)	CS(Cu)	HR-Hot Rolled
DD12	STW23		FEP12		HR-Hot Rolled
DD13	STW24	3C	FEP13	DS	HR-Hot Rolled
DD13(B)	STW24(B)	3C(B)	FEP13(B)	DS(B)	HR-Hot Rolled
DX51D	ST02Z	GC	FEP02G	LFO	HDG-Galvanized
DX52D	ST03Z	GE	FEP03G	DQ	HDG-Galvanized
DX53D	ST04Z	GES	FEP05G	DQSK	HDG-Galvanized
DX54D	ST06Z		FEP06G	DDS	HDG-Galvanized
E295	ST50-2	A50-2	FEE290		HR-Hot Rolled
E335	ST60-2	A60-2	FEE590		HR-Hot Rolled
E360	ST70-2	A70-2	FEE690		HR-Hot Rolled
HC260LA	ZSTE260	E240C			CR-Cold Rolled
HC300LA	ZSTE300	E280C	FEE275F	Gr. 45	CR-Cold Rolled
HC340LA	ZSTE340	E315C	FEE315F	Gr. 50	CR-Cold Rolled
HC380LA	ZSTE380	E355C	FEE355F	Gr. 55	CR-Cold Rolled
HC420LA	ZSTE420		FEE420F	Gr. 60	CR-Cold Rolled
HCT450X(DP450)			FEE450DPF	ZNT/2S	HDG-Galvanized
HCT450X(DP450)			FEE450DPF		CR-Cold Rolled
HCT500X(DP500)		XE300B	FEE500DPF		CR-Cold Rolled
HCT600X (DP600)			FEE600DPF	ZNT/2S	HDG-Galvanized
HCT600X(DP600)		XE360B	FEE600DPF		CR-Cold Rolled
HCT780X(DP800)		XE450B	FEE800DPF		CR-Cold Rolled
HX260LAD	ZSTE260	E240C - E260C			HDG-Galvanized
HX300LAD	ZSTE300	E280C - E315C		Gr. 45	HDG-Galvanized
HX340LAD	ZSTE340	E355C		Gr. 50	HDG-Galvanized
HX380LAD	ZSTE380			Gr. 55	HDG-Galvanized
HX420LAD	ZSTE420			Gr. 60	HDG-Galvanized
P235GH	HI	A37CP	FE360-1KW	A285 Gr. C - A414 Gr. C	HR-Hot Rolled
P235S	SPH 235	A 37 AP	Fe 360-2KW		HR-Hot Rolled
P245NB	H I	BS 1	FEE24 KR		HR-Hot Rolled
P265GH	HI	A42CP	FE410-1KW	A414 Gr. E	HR-Hot Rolled
P265NB	H II	BS 2	FEE27 KR		HR-Hot Rolled
P265S	SPH 265	A 42 AP	Fe 410-2KW		HR-Hot Rolled
P275SL	SPH275				HR-Hot Rolled
P295GH	17Mn4	A48CP	FE460-1KW	A299 A414 Gr. F	HR-Hot Rolled
P310NB	17Mn4	BS 3	FEE31 KR		HR-Hot Rolled
P355GH	A19Mn6	A52CP	FE510-1KW	A414 Gr. G	HR-Hot Rolled
P355NB	19Mn6	BS 4	FEE35 KR		HR-Hot Rolled
P355NH	WSTE355	A510 AP	FEE355 KW	A516 Gr. 70	HR-Hot Rolled
P355NL1	TSTE355	A510 FP	FEE355 KT	A516 Gr. 70	HR-Hot Rolled
S220GD		C230		SQ-GRADE230	HDG-Galvanized
S235J0	ST37-3U	E24-3	FE360C		CR-Cold Rolled
S235J0W		E24W-3			HR-Hot Rolled
S235J2				A36	HR-Hot Rolled
S235J2(+N)	ST37-3N	E24-4	FE360D	A284 Gr. D	CR-Cold Rolled
S235J2C	ST37-3N	E24-4			HR-Hot Rolled
S235J2W	WTST37-3	E24W-4			HR-Hot Rolled
S235JR	ST37-2	E24-2	FE360B	SAE1015	HR-Hot Rolled
S235JR(Cu)	ST37-2(Cu)	E24-2(Cu)	FE360B(Cu)	SAE1015(Cu)	HR-Hot Rolled
S235JRC	RST37-2	E24-2NE			HR-Hot Rolled
S250GD	STE250-2Z	C250	FEE250G	SQ-GRADE255	HDG-Galvanized
S275J0	ST44-3U	E28-3	FE430C	A572 Gr. 42	CR-Cold Rolled
S275J2(+N)	ST44-3N	E28-4	FE430D	A572 Gr. 42.50	CR-Cold Rolled
S275JR	ST44-2	E28-2	FE430B	SAE1020	HR-Hot Rolled
S275JRC	ST44-2	E28-2			HR-Hot Rolled

Europe EN	Germany DIN	France AFNOR	Italy UNI	USA SAE/AISI	Usual Finish
S275M	STE285TM				HR-Hot Rolled
S275ML	TSTE285TM				HR-Hot Rolled
S275N	STE285				HR-Hot Rolled
S275NL	TSTE285			A633A	HR-Hot Rolled
S280GD	STE280-2Z	C280	FEE280G	SQ-GRADE275	HDG-Galvanized
S315MC	QSTE300TM	E315D	FEE315	045XLK	HR-Hot Rolled
S320GD	STE320-3Z	C320	FEE320G		HDG-Galvanized
S350GD	STE350-3Z	C350	FEE350G	SQ-GRADE340	HDG-Galvanized
S355	ST52-3	E36		GR50	HR-Hot Rolled
S355J0	ST52-3U	E36-3	Fe510C		HR-Hot Rolled
S355J0W		E36W-B3	FE355W	A70950W	HR-Hot Rolled
S355J0WP		E36W-A3			HR-Hot Rolled
S355J2		A52FP			HR-Hot Rolled
S355J2(+N)	ST52-3N	E36-3	FE510D	A572 Gr. 50	CR-Cold Rolled
S355J2(Cu)		A52FP(Cu)			HR-Hot Rolled
S355J2C	ST52-3N	E36-3			HR-Hot Rolled
S355J2W	WTST52-3			A70950W	HR-Hot Rolled
S355J2WP		E36W-A4			HR-Hot Rolled
S355JR		E36-2	FE510B	A633 Gr. A, C, D	HR-Hot Rolled
S355K2(+N)		E36-4			CR-Cold Rolled
S355K2W				A70950W	HR-Hot Rolled
S355K2W(+N)		E36W-B4			HR-Hot Rolled
S355M	STE355TM	E355R	FEE355KGT	A572 Gr. C	HR-Hot Rolled
S355MC	QSTE360TM	E360D	FEE355	GR50	HR-Hot Rolled
S355ML	TSTE365TM	E355FP		A945 Gr. 50	HR-Hot Rolled
S355N	STE355	E355R	FEE355KGN		HR-Hot Rolled
S355NL	TSTE355	E355FP		A633C	HR-Hot Rolled
S355NL	TSTE355	E355FP	FEE355KTN	A633 Gr. C, D	CR-Cold Rolled
S420M	STE420TM	E420R			HR-Hot Rolled
S420MC	QSTE420TM	E420D	FEE420	GR60	HR-Hot Rolled
S420ML	TSTE420TM	E420FP		A945 Gr. 60	HR-Hot Rolled
S420N	STE420	E420R			HR-Hot Rolled
S420NL	TSTE420	E420FP		A633E	HR-Hot Rolled
S460				GR65	HR-Hot Rolled
S460MC	QSTE460TM	E445D	FEE460	GR65	HR-Hot Rolled
S460ML	TSTE460TM	E460FP			HR-Hot Rolled
S460N	STE460	E460R			HR-Hot Rolled
S460NL	TSTE460	E460FP			HR-Hot Rolled
S460Q		E460TR		A537A2	HR-Hot Rolled
S460QL	TSTE460V	E460TFP			HR-Hot Rolled
S500MC	QSTE500TM	E490D	FEE490	GR70	HR-Hot Rolled
S500Q	STE500V	E500TR			HR-Hot Rolled
S500QL	TSTE500V	E500TFP			HR-Hot Rolled
S550GD		C550	FEE550G	SQ-GRADE550	HDG-Galvanized
S550MC	OSTE550TM	E560D	FEE560	GR80	HR-Hot Rolled
S550ML	OSTE550TM	E560D	FEE560	GR80	HR-Hot Rolled
S550Q	STE550V	E550TR			HR-Hot Rolled
S550QL	TSTE550V	E550TFP			HR-Hot Rolled
S600MC		E620D			HR-Hot Rolled
S620Q	STE620V	E620TR			HR-Hot Rolled
S620QL	TSTE620V	E620TFP			HR-Hot Rolled
S690Q	STE690V	E690TR		A514F	HR-Hot Rolled
S690QL	TSTE690V	E690TFP		A709100	HR-Hot Rolled
S700MC	OSTE690TM	E690D			HR-Hot Rolled
S890QL	TSTE890V				HR-Hot Rolled
S960QL	TSTE960V	E960T-11			HR-Hot Rolled
X100CrMoV5	X100CrMoV51	X100CrMoV5	X100CrMoV5-1 KU	A-2	
X153CrMoV12	X153CrMoV12-1	X153CrMoV12	X153CrMoV12-1	D-2	
X17CrNi16-2	X16CrNi16			431 X	
X32CrMoV3-3	X32CrMoV3-3	X32CrMoV3-3		H10	
X5CrNiMo17-12-2	X5CrNiMo17-12-2	X5CrNiMo17-12-2	X5CrNiMo17-12	306	
X8CrNiS18-9	X10CrNiS18-9	Z8CNF18-09	X10CrNiS18-09	303	
XS460M	STE460TM	E460R			HR-Hot Rolled
11SMn37	9SMn28	11SMn37	CF95Mn28	1215	
11SMnPb30	9SMnPb28	11SMnPb30	CF95MnPb29	12L14	
16Mo3	15Mo3	15D3	16Mo3	A204 Gr. B	HR-Hot Rolled
16Mo5	16Mo5			4520	
20MnB5	22B2	20MnB5RR	21B3		HR-Hot Rolled
20NiCrMo2-2	21NiCrMo22	20NiCrMo2-2	20NiCrMo2	9620	
25CrMo4	25CrMo4	25CD4	25CrMo4		HR-Hot Rolled
28Mn6	28Mn6			SAE1527	HR-Hot Rolled
30CrNiMo8	30CrNiMo8	30CDN8	30CrNiMo8		HR-Hot Rolled
30MnB5	28B2	30MnB5RR			HR-Hot Rolled
34Cr4	34Cr4	34CD4	34Cr4		HR-Hot Rolled
34CrMo4	34CrMo4	34CD4	34CrMo4		HR-Hot Rolled
34CrNiMo6	34CrNiMo6		34CrNiMo6	SAE4340	HR-Hot Rolled
35S20	35S20	35S20	19S7	1140	
36CrNiMo4	36CrNiMo4		36CrNiMo4		HR-Hot Rolled
36NiCrMo16		35NCD16			HR-Hot Rolled
37Cr4	37Cr4	38C4	37Cr4		HR-Hot Rolled
38Cr2	38Cr2	38C2			HR-Hot Rolled
38CrS2	38CrS2	38C2u			HR-Hot Rolled
41Cr4	41Cr4	42C4	41Cr4		HR-Hot Rolled
42CrMo4	42CrMo4	42CD4	42CrMo4	SAE4142	HR-Hot Rolled
50CrMo4	50CrMo4		50CrMo4		HR-Hot Rolled
51CrV4	50CrV4	50CV4	51CrV4	50C4V2	HR-Hot Rolled

## Products

### Elbow/Bend

#### Production Range

**Outside Diameter** : Seamless Elbow (½" ~ 24")  
ERW / Welded / Fabricated Elbow (½" ~ 72")

**Wall Thickness** : 3mm – 40mm / SCH5, SCH10, SCH20, SCH30, STD, SCH40, SCH60, SCH80, XS, SCH100, SCH120, SCH140, SCH160, XXS

**Bending Radius** : R=1D – 10D, 15D, 20D

**Product's Angle** : 5°–180° Elbows, 90° and 45° Long Radius Elbow,  
180° Long Radius Returns, Short Radius Elbow and Returns

#### Manufacturing Standards

ASME B16.9, ANSI N16.28, MSS-SP-43, ASME B16.25, DIN 2605, GOST 17375, GOST 30753, EN10253-1, DIN10253-2, ISO3419, ISO5251







### Material Grades

#### Stainless Steel

ASTM / ASME SA403 GR WP "S" / "W" / "WX"

304, 304L, 304H, 309, 310H, 316L, 316H, 317, 317L, 321, 321H, 904, 904L, 347, 347H.

#### Duplex Steel

ASTM / ASME SA815, UNS NO. S31803, S32205, S32550, S32750, S32760.

#### Carbon Steel

ASTM / ASME A234 WPB, WPC

ASTM/ASME A860, WPHY42, WPHY46, WPHY52, WPHY60, WPHY65 & WPHY70.

#### Alloy Steel

ASTM / ASME A234, WP1, WP5, WP9, WP11, WP12, WP22, WP23, WP91.

#### Low Temperature Carbon Steel

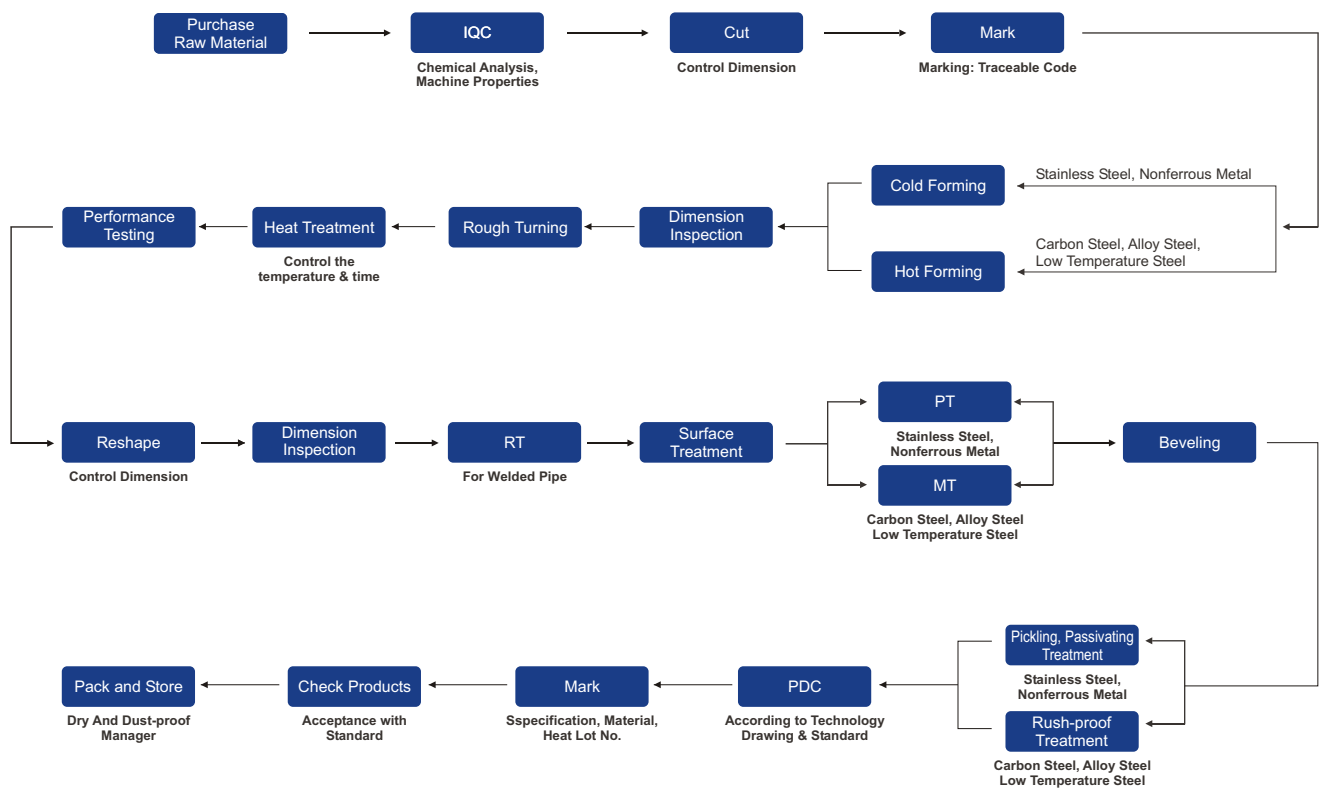
ASTM A420, WPL3 / 4A420WPL6



# Products

## TEE/CROSS

### THE PRODUCTION & QUALITY CONTROL FLOW CHART FOR PIPE BUTT-WELDING FITTINGS



## Production Range

**Types** : Equal Tee, Reducing Tee

**Outside Diameter** : Seamless Pipe Tee (1/2" ~ 24"),  
ERW / Welded / Fabricated Pipe Tee (1/2" ~ 72")

**Wall Thickness** : 3mm - 40mm / SCH5, SCH10, SCH20, SCH30, STD, SCH40,  
SCH60, SCH80, XS, SCH100, SCH120, SCH140, SCH160, XXS

### Manufacturing Standards

ASME B16.9, MSS-SP-43, ASME B16.25, DIN2615, GOST17376, EN10253-1,  
DIN10253-2, ISO3419, ISO5251

### Material Grades

#### Stainless Steel

ASTM / ASME SA403 GR WP "S" / "W" / "WX" 304, 304L, 304H, 309, 310H, 316L,  
316H, 317, 317L, 321, 321H, 904, 904L, 347, 347H.

#### Duplex Steel

ASTM / ASME SA815 UNS NO. S31803, S32205, S32550, S32750, S32760.

#### Carbon Steel

ASTM / ASME A234 WPB, WPC

ASTM / ASME A860 WPHY42, WPHY46, WPHY52, WPH60, WPHY65 & WPHY70

#### Alloy Steel

ASTM / ASME A234 WP1, WP5, WP9, WP11, WP12, WP22, WP23, WP91

#### Low Temperature Carbon Steel

ASTM A420 WPL3 / A420WPL6



## Products

### Concentric Reducer & Eccentric Reducer

**Outside Diameter** : Seamless Pipe Reducer (1/2"-24"),

ERW / Welded / Fabricated Pipe Reducer (1/2" -72")

**Types** : Concentric Reducer, Eccentric Reducer

**Wall Thickness** : 3mm - 40mm / 40mm / SCH5, SCH10, SCH20, SCH30, STD,  
SCH40, SCH60, SCH80, XS, SCH100, SCH120, SCH140,  
SCH160, XXS

#### Manufacturing Standards

ASME B16.9, MSS-SP-43, ASME B16.25, DIN2616, GOST17378, EN10253-1,  
DIN10253-2, ISO3419, ISO5251



Cap. Stub End



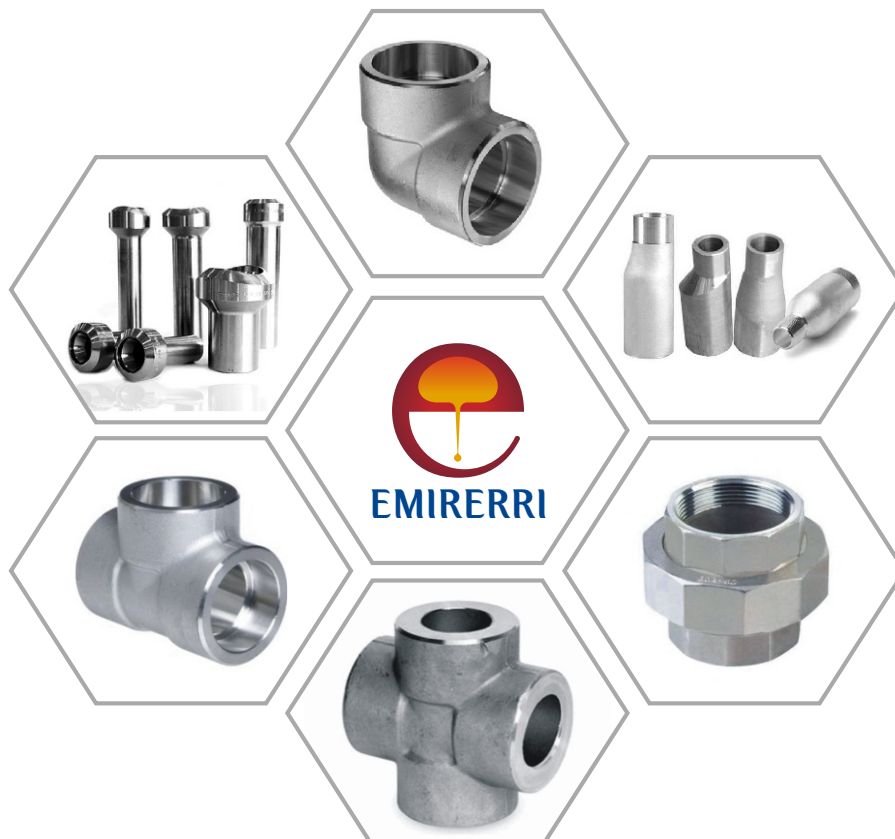
# Products

## Forged Fitting

<b>Pressure Class</b>	2000LBS, 3000LBS, 6000LBS
<b>Products</b>	<ul style="list-style-type: none"> <li>✿ Elbow 90 Degree ✿ Elbow 45 Degree ✿ Tee</li> <li>✿ Union ✿ Street Elbow ✿ Coupling ✿ Half Coupling</li> <li>✿ Reducing Coupling ✿ Cap ✿ Hex Head Bushing</li> <li>✿ Hex Head Plug ✿ Square Head Plug ✿ Outlet</li> <li>✿ Round Head Plug ✿ Hex Nipple ✿ Swage Nipple</li> </ul>
<b>Dimension Specifications</b>	ASME 16.11, MSS SP-79, 83, 95, 97, BS 3799
<b>Size</b>	1/8"~4" (DN6~DN100)

**Material Grades:**

Stainless Steel – ASTMA182, F304, F304L, F306, F316L, F304H, F309S, F309H, F310S, F310H, F316TI, F316H, F316LN, F317, F317L, F321, F321H, F11, F22, F91, F347, F347H, F904L, ASTMA312/A403, TP304, TP304L, TP316, TP316L, CASTM A105, A350 LF2



## Products

### Flange

- Type** : Threaded Flange, Socket Weld Flange, Lap Joint Flange, Slip On Flange, Weld Neck Flange, Plate Flange, Orifice Flange, Figure 8, Flange, Oval, Flange, Blind
- Size** : 1/2"-72"
- Class** : 150#, 300#, 400#, 600#, 900#, 1500#, 2500#
- Material** : Stainless Steel, Carbon Steel, Alloy Steel

#### Standards

**ASTM A182** : F1,F5,F9,F11,F304/304L,F316/316L,F317L,F321/321H,F44,F51,F52

**ASTM A350** : LF1,LF2,LF3,LF4

#### ASTM A105

**EN10272** : 1.4301, 1.4306, 1.4307, 1.4401, 1.4404, 1.4541, 1.4571

**Standard** : ANSI, API, AWWA, DIN, EN, BS, JIS

**ANSI** : ANSI B16.5, ANSI B16.47, MSS SP44, ANSI B16.36, ANSI B16.48

**DIN** : DIN2527, DIN2566, DIN2573, DIN2576, DIN2641, DIN2642, DIN2655, DIN2656, DIN2627, DIN2628, DIN2629, DIN 2631, DIN2632, DIN2633, DIN2634, DIN2635, DIN2636, DIN2637, DIN2638, DIN2673

**B.S** : BS4504,BS4504,BS1560,BS10  
EN1092-1,BS4504,JIS

- Testing** : PMI Test  
Dimension Measure  
Visual Check  
Mechanical Test  
Intergranular Corrosion  
Hardness Test



Blind



Welded Neck Flange



Slip On Flange

## THE PRODUCTION & QUALITY CONTROL FLOW CHART FOR FLANGES

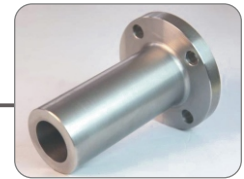
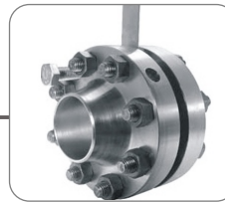
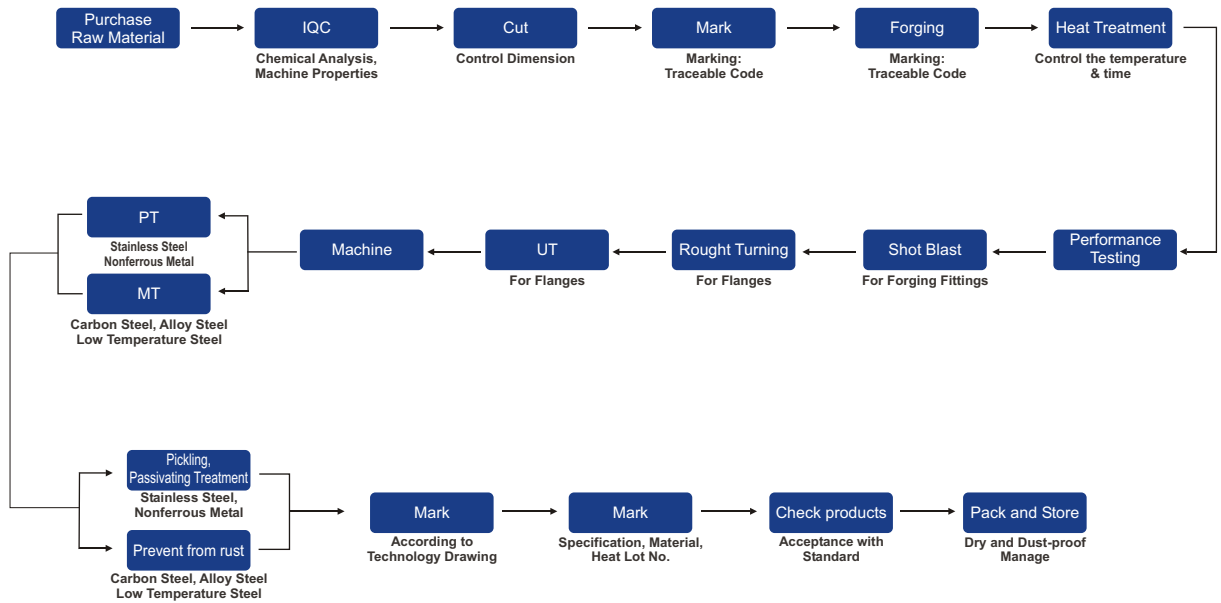
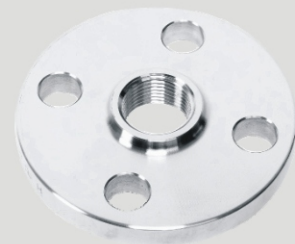


Plate Flange



Socket Welding Flange



Threaded Flange

## Products

### PIPE

#### Manufacture Process

Seamless Pipe : Cold Drawn / Cold Rolled / Hot Rolled

Welded Pipe : Cold Forming / Welded / EFW

Production Range : DN15-DN900, SCH5S-XXS  
DN15-DN1800, SCH5S-XXS

#### Specification & Standard :

ASTM / ASME SA312GR. TP304, 304L, 304H, 321, 310S, 310H, 316, 316L, 347, 347H

ASTM / ASME SA358CL 1 & CL3 GR. 304, 304L, 304H, 310S, 310H, 316, 316L, 347, 347H

Duplex ASTM / ASME SA790 UNS NO S31803, S32205 and etc.

ASTM A53GR. A & B

ASTM A106GR. A, B & C.

API5LGR. B, X42, X46, X52, X60, X65 & X70 - PSL1 & PSL2.

### PLATES & SHEETS

#### Stainless Steel Sheets, Plates & Coils

**Size** : 1000mm to 3000mm Width X 2500mm/5000mm/10000mm Length & Coil Form

**Thickness** : 1mm to 200mm

**Specifications** : ASTM/ASME SA 240 Grade. 201, 202, 304, 304L, 316, 316L, 316Ti, 321, 347, 317, 310S, 904L, 410, 420, 430, 440.

#### Shipbuilding Plate

**Size** : 6' x 30' | 8' x 30'

**Thickness** : 6 mm to 100 mm

**Specifications** : ABS / DNV GR A, B, D, E, AH32, DH32, EH32, FH32, AH36, DH36, EH36, FH36

#### Carbon Steel Sheet, Plates & Coils

**Size** : 1000mm to 3000mm Width X 2500mm/5000mm/10000mm Length & Coil Form

**Thickness** : 1mm to 200mm

**Specifications** : ASTM/ASME A516/517 GR. X42/46/52/56/60/70, IS2062, IS2002

#### Duplex/Super Duplex Sheet, Plates & Coils

**Size** : 1000mm to 3000mm Width X 2500mm/5000mm/10000mm Length & Coil Form

**Thickness** : 1mm to 200mm

**Specifications** : ASTM/ASME SA 240 UNS NO. S31803, S32205, S32550, S32750, S32760



## Quality

Quality is Emirerri's priority. In our philosophy, quality is not only the durability and defect free nature of product but also its utility and applicability to satisfy the sole purpose for which it was bought. Thus, we are committed to produce products, which can satisfy different requirements and purposes. We have adopted stringent quality control measures to ensure superior quality and zero defect products. Quality is checked at different stages of production and supply and the raw material we use is sourced only from reliable and established vendors.

The bitterness of poor quality remains long after low pricing is forgotten. So, we follow strong measure of quality checking.

We are able to maintain high quality standards through our committed personnel and sound infrastructure. To ensure the quality of each material, we provide Materials Test Certificate along with supply. Our team of experts maintain a vigil on the quality of the products. Every single piece is attached with test certificates and reports. Emirerri aims to continually improve the quality, to serve our clients better.

### Quality Objectives:

We consider three elements to be essential for the overall quality of the company services:

- Independence & Objectivity.
- Technical & Scientific Quality.
- Practical Benefits to Clients.



### Quality Control:

We exercise stringent quality control measures to ensure accurate dimensions and mechanical properties of our products. Our products are approved by quality assurance system by passing through following processes and quality systems:

- Certification and Supplementary Test
- Finishing and Marketing.
- Material Control System
- Machining and Dimensional Control
- Process Control System

### Quality Assurance:

The quality assurance system is guided by principles that support our unique working culture which incorporates respect, self-management, open communication and creativity.

### Principles:

- Strive to have the best quality and technologies in our industry.
- Care about our client's time and money.
- Honor our words and client faith on us.
- Act with integrity and commitments.

### Our Quality Standards:

Our quality standards are above par as we understand our Customers requirement and supply the same after a series of Quality Assurance and Quality Control at Emirerri Steel. Across the entire business supply chain, operations and marketing appropriate quality assurance systems are in place to ensure correctness at each step of the business cycle.

Packaging





GOVERNMENT OF INDIA  
MINISTRY OF CORPORATE AFFAIRS  
Central Registration Centre

**Certificate of Incorporation**

[Pursuant to sub-section (2) of section 7 of the Companies Act, 2013 (18 of 2013) and rule 18 of the Companies (Incorporation) Rules, 2014]

I hereby certify that EMIRERRI STEEL MANUFACTURER PRIVATE LIMITED is incorporated on this Twenty first day of September Two thousand seventeen under the Companies Act, 2013 (18 of 2013) and that the company is limited by shares.

The Corporate Identity Number of the company is U74999MH2017PTC299984.

The Permanent Account Number (PAN) of the company is AAECE7948L \*

Given under my hand at Manesar this Twenty first day of September Two thousand seventeen.



Digital Signature Certificate  
Mrs. ANJALI POKHRIYAL

For and on behalf of the Jurisdictional Registrar of Companies  
Registrar of Companies  
Central Registration Centre

Disclaimer: This certificate only evidences incorporation of the company on the basis of documents and declarations of the applicant(s). This certificate is neither a license nor permission to conduct business or solicit deposits or funds from public. Permission of sector regulator is necessary wherever required. Registration status and other details of the company can be verified on www.mca.gov.in

Mailing Address as per record available in Registrar of Companies office:  
EMIRERRI STEEL MANUFACTURER PRIVATE LIMITED  
608, 6th Floor, JK Chamber, Plot No. 76, Sector-17, Vashi, Navi Mumbai,  
Mumbai City, Maharashtra, India, 400703

\* as issued by the Income Tax Department



**Certificate of Registration**

This is to certify that

**Emirerri Steel Manufacturer Private Limited**  
OFFICE NO 23, 3RD FLOOR, ANAND BHAVAN, 290 SBS ROAD, FORT, MUMBAI - 400001, MAHARASHTRA, INDIA

has been independently assessed by QRO and is compliant with the requirement of:

**ISO 9001:2015**  
**Quality Management System**

For the following scope of activities:  
**EXPORTERS & MANUFACTURER OF STEEL MATERIALS**

Date of Certification: 11th January 2023      2<sup>nd</sup> Surveillance Audit Due: 10th January 2025  
1<sup>st</sup> Surveillance Audit Due: 10th January 2024      Certificate Expiry: 10th January 2026



Head of Certification

Validity of this certificate is subject to annual surveillance audits to be done successfully on or before 365 days from date of the audit. (In case surveillance audit is not allowed to be conducted this certificate shall be suspended / withdrawn).  
The Validity of this certificate can be verified at www.qrocert.org.  
This certificate of registration remains the property of QRO Certification LLP and shall be returned immediately upon request.

India Office | QRO Certification LLP  
142, 1<sup>st</sup> Floor, Avtar Enclave, Near Paschim Vihar West Metro Station, Delhi-110063, (INDIA)  
Website : www.qrocert.org, E-mail : info@qrocert.org

## Quality Policy

*“Manufacturer of butt weld pipe fittings & forged pipe fitting, and Exporter of Pipes, tubes all types / Specification”*

**Emirerri** products shall work towards a common goal of achieving **Total Customer Satisfaction**

With quality, speed & cost benefit while meeting customer requirements. This responsibility & **commitment** is practiced and communicated by top Management through:

**Implementation** of a policy, which meets the Quality Standards ISO 9001:2015 and supports the organization's purpose;

Empowering division, teams, and staff interact to deliver products which meet Customer needs, and also provide **continual improvement** as documented by their Quality objectives.

Also meeting **Statutory and Regulatory requirements**;  
Review of the suitability of quality policy and procedures.

FOR

**Emirerri Steel Manufacturer Private Limited**



Director



संघ शासन  
केन्द्र के भारत  
सूक्ष्म, लघु और मध्यम उद्यम संस्थान  
MINISTRY OF MICRO, SMALL & MEDIUM ENTERPRISES



सूक्ष्म, लघु और मध्यम उद्यम  
MICRO, SMALL & MEDIUM ENTERPRISES



उद्योग आधार  
Udyog Aadhaar

A	Type of Enterprises	Micro	Small	Medium
	Manufacturing	A	B	C
	Services	D	E	F
	State	MH18MA093628		

**Udyog Aadhaar Registration Certificate**

Udyog Aadhaar Number: MB18MA093628

Name of Enterprise: EMIRERRI STEEL MANUFACTURER PRIVATE LIMITED

Location of Plant/Units:

Sl. No.	Plant/Block No.	Name of Premises/Building	Village	Road/Street/ Lane	Area/Locality	City	Pin	State	District
1	Office No. 23	3RD FLOOR, ANAND BHAVAN	BRUNAGAL	290, SBS ROAD	Fort	MUMBAI	400001	MAHARASHTRA	MUMBAI CITY

Official Address of Enterprise:

OFFICE NO. 23, 3RD FLOOR, ANAND BHAVAN, 290, SBS ROAD, MUMBAI - 400001  
District: MUMBAI CITY      State: MAHARASHTRA      Pin: 400001  
Mobile No: 0934164441      Email: anrmanesar@gmail.com

Date of commencement: 24/09/17  
Major Activity: MANUFACTURING  
Enterprise Type: Micro  
Previous Registration details if any: =  
National Industry Classification Code: =

SNI	NIC 2 Digit	NIC 4 Digit	NIC 5 Digit Code	Activity Type
1	24	2410	24108	Manufacture of basic iron and steel
2	24	2410	24109	Manufacture of other basic iron and steel n.e.c.

Authorized Signer: \_\_\_\_\_ Date of Filing: 14/12/2017      Date of Printing: 14/12/2017

Disclaimer: This is a computer generated statement, its signature required.  
Printed from scyogaaadhaar.gov.in

MyAadhaar Mobile App (Beta Version) is available now for download. <https://myaadhaar.com/DownloadMyAadhaarApp>



BOMBAY CHAMBER  
**Bombay Chamber of Commerce and Industry**  
Mackintosh Mecklenburg Building, Ballard Estate, Mumbai 400 001

*Membership Certificate*

This is to certify that

**Emirerri Steel Manufacturer Pvt. Ltd.**

has been elected as a Member  
of the Bombay Chamber of Commerce and Industry  
with effect from **February 2018**

Membership Certificate No. **BC/71170/O/2018**



DIRECTOR GENERAL



**JSRS**  
joint supplier registration system

**CERTIFICATE OF APPROVAL**  
*Awarded to*

**EMIRERRI STEEL MANUFACTURER PRIVATE LIMITED**

As an Approved Supplier to the Oman Oil & Gas Industry's Joint Supplier Registration System (JSRS)

Country of Origin : India      JSRS Supplier Code : IN100505

Registration Date : 02-12-2017      Valid till : 31-01-2019




This Certificate is issued for supplying Products & Services to Oil & Gas and other related industries in Oman and is not valid to acquire permits from other Governmental or Non-Governmental agencies.



**EMIRERRI**



**Registered Office :**

Office No. 23, 3rd Floor, Anand Bhavan, 290, S.B.S. Road,  
Fort, Mumbai - 400 001, Maharashtra, India.

Tel. : +91-22-2261 1718

Email : emirerristeel@gmail.com / sales@emirerri.com

Web : www.emirerri.com

**Factory :**

11A, Bapa Sitaram Industrial Estate, Dhumal Nagar,  
Vasai (E), Dist-Thane, Maharashtra, India.

**Overseas Sales Office :**

★ Tunis

★ Dubai

★ Maroc

★ Libya

★ France

★ Saudi Arabia

★ Zimbabwe

★ Peru

★ Mexico

★ Singapore